

EVOLVING BIS TECHNOLOGY FOR THE FUTURE

INTRODUCING THE BRIDGE SOFTWARE

At Bodystat, innovation is at the heart of everything we do. The Bridge Project is our latest software upgrade, developed to boost the performance of the Multiscan 5000 – our industry-leading Bioimpedance Spectroscopy (BIS) device. This new platform revolutionises the way tests are carried out, streamlining your workflow to make it faster, smarter, and more efficient.



INTUITIVE SOFTWARE

WHAT'S NEW: KEY SOFTWARE & DEVICE UPDATES

SOFTWARE ENHANCEMENTS

- Real-time data streaming to your electronic device for immediate results
- Unlimited test storage within the software
- Enhanced patient record features (Patient ID, search, group assignment)
- New dialysis mode with “Urea Distribution Volume” and ASMM updates
- Hidden research mode unlocks segmental measurement functionality
- Report upgrades:
 - Gauges to visualise patient status
 - Variance indicators vs. normative data
 - Clear summary of abnormal parameters
- Multi-language support in development

NEW REPORTING CAPABILITIES

- Inclusion of Appendicular Skeletal Muscle Mass (ASMM)
- ASMMI and SMMI indexes for deeper clinical insight
- Easy to read quality gauges to verify valid tests

CONNECTIVITY IMPROVEMENTS

- Seamless WiFi connection to tablet, laptop, or desktop
- Device screen deactivates during use to conserve battery
- Full control of test cycle via PC software

KEY BENEFITS

IMPROVED EFFICIENCY

Run tests directly from your PC or Tablet and reduce time spent handling the device.

REDUCED DOWNTIME

Extended battery life and optimised workflows ensure smoother operations.

BETTER DATA MANAGEMENT

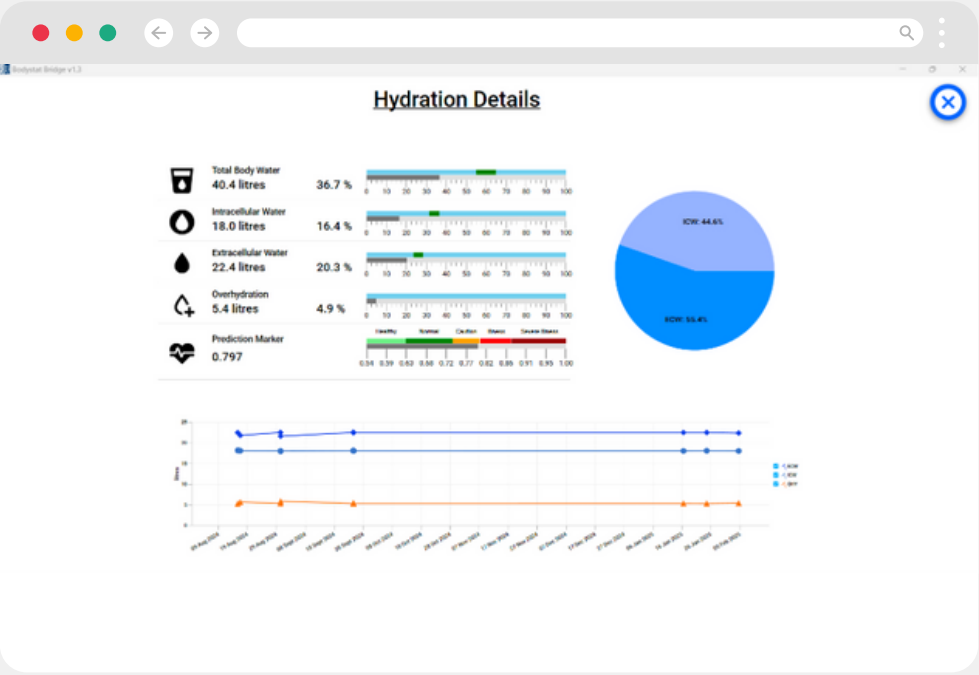
Secure, centralised data handling with instant access to historical tests.

SMARTER CLINICAL INSIGHT

Advanced analytics and reporting enhance interpretation and clinical decisions.

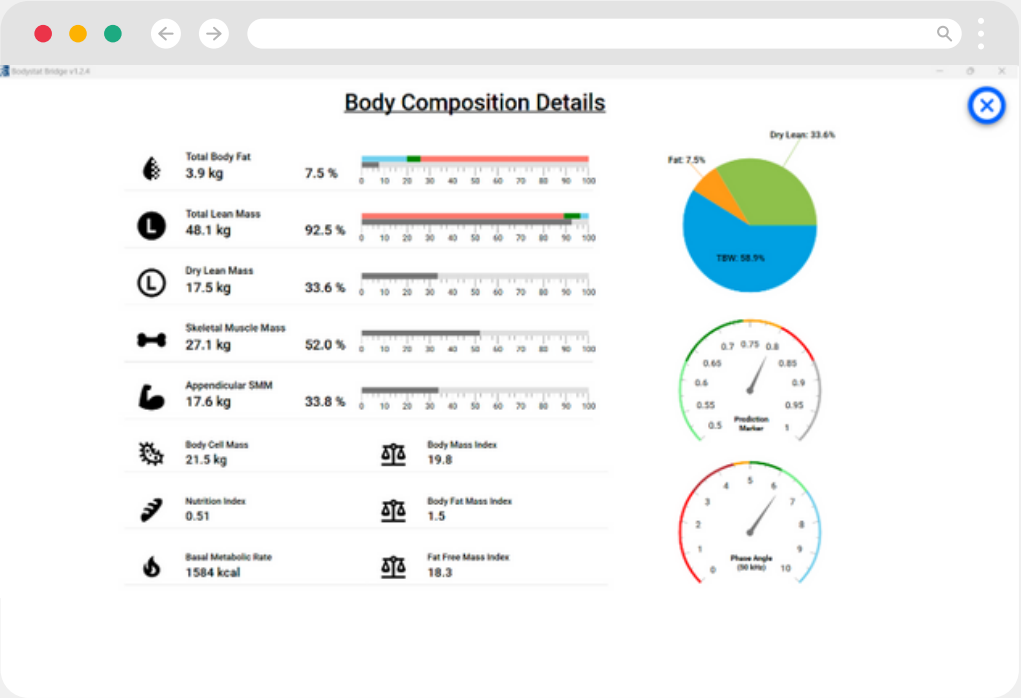
CUSTOMISABILITY & SCALABILITY

Modes for dialysis and research and upcoming updates tailored to specific patient groups.



This report provides insight into an individual's hydration status and helps identify trends over time when multiple assessments are conducted.

This report presents detailed body composition data, including total body fat, total lean mass, dry lean mass, skeletal muscle mass, appendicular skeletal muscle mass, body cell mass, and basal metabolic rate (BMR).



The Bridge software program sends data through wifi and shuts off the screen of the Multiscan analyser.



Battery life is conserved due to decreased screen time on Multiscan analyser.



Test can be controlled via a PC or tablet.



All of the subject data is entered into the software and is not stored on the device.